

C-Pd (Carbon Palladium)

H. Okamoto

[Massalski2] showed a schematic Pd-C phase diagram drawn by [Moffatt] based on available data along the (Pd) solvus.

Figure 1 shows the Pd-C phase diagram calculated by [2006Du]. It appears that the thermodynamic model was determined so that the calculated result agrees with [Moffatt]. Therefore, experimental corroboration is needed for the validity of the phase boundaries, particularly the (C) liquidus along which no experimental data are available.

Reference

2006Du: Z. Du, C. Guo, X. Yang, and T. Liu, A Thermodynamic Description of the Pd-Si-C System, *Intermetallics*, 2006, **14**, p 560-569

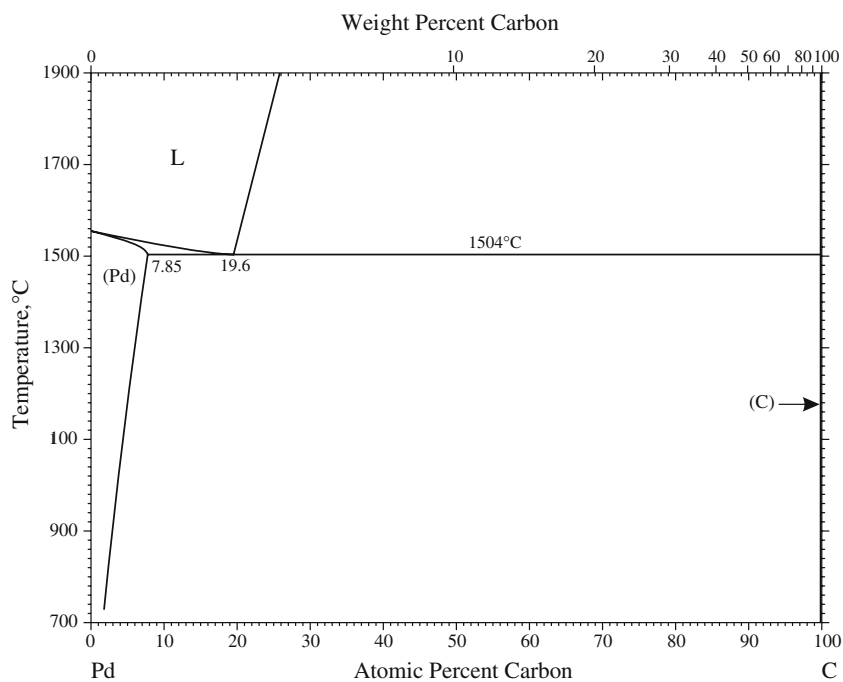


Fig. 1 Pd-C phase diagram